

Housing ϕ 35mm DC Brush Motor xRK-540/545/ 550/555

OUTPUT : 30W~100W (APPROX)

BRUSH TYPE : カーボンブラシ /Graphite Brush Motor

WEIGHT(APPROX) : 160g(RK-540/545)/250g(RK-550/555)

代表的用途 /Typical Application

家電機器 / バキュームクリーナー、コンプレッサー、マッサージャ、ヘアドライヤ

事務機器 / レーザプリンタ、複写・複合機

DIY ツール / 電動ドライバー、

自動車関連機器 /

Household App/ Vacuum Cleaner, Compressor, Massager, Hair Dryer

Office Automation Equipment / Printer, Scanner,

DIY Tool / Electric Tool

Automotive Equipment / Compressor for Car

Motor Parameter

No.	Standard Model No.	Product No.	Outline Size			Rated Voltage (V)	No Load		at Max Efficiency				at Stall					
			Motor OD (mm)	Housing Length (mm)	Shaft OD (mm)		No Load Speed (rpm)	No Load Current (A)	Rated Speed (rpm)	Rated Current (A)	Rated Torque		Output (W)	Starting Torque		Starting Current (A)		
											(mN-m)	(g · cm)		(mN-m)	(g · cm)			
Typical Grade xRK-540/545																		
182	DC-QRK-540DH	75020	35.8	50.0	3.17	4.8	15400	2.00	13000	10.95	24.65	251.56	33.56	159.68	1629.40	60.00		
183	DC-QRK-540DH	50045			3.17	12.0	17500	0.95	15100	5.93	31.24	318.78	49.40	226.30	2309.20	37.04		
184	DC-QRK-545DH	22140			3.17	24.0	4800	0.07	4200	0.49	19.27	196.66	8.48	153.02	1561.40	3.37		
185	DC-QRK-545DH	20165			3.17	32.0	5500	0.065	4800	0.45	21.10	215.34	10.61	167.79	1712.10	3.14		
186	DC-QRK-545DH	16250			3.17	32.0	3900	0.05	3300	0.25	15.46	157.74	5.34	101.42	1034.90	1.39		
187	DC-QRK-545DH	50018			3.17	12.0	24000	1.30	20600	7.90	30.13	307.46	64.99	213.22	2175.70	48.00		
188	DC-QRK-545DH	18150			3.17	24.0	5600	0.12	4600	0.54	16.06	163.85	7.73	87.87	896.60	2.40		
189	DC-QRK-545SH	45022			3.17	10.0	23200	1.20	19200	5.62	16.92	172.70	34.03	96.19	981.50	26.32		
190	DC-TRK-540PH	7516			3.17	7.4	26400	2.50	21915	13.83	25.50	260.60	58.68	186.30	1900.00	87.00		
191	DC-TRK-545SH	1815			3.17	24.0	5100	0.20	4084	0.60	16.70	170.00	7.10	103.00	1050.00	4.00		
192	DC-TRK-540SH	22100			3.17	12.0	3850	0.20	3140	0.60	10.70	109.00	3.54	58.90	600.00	2.80		
193	DC-TRK-540PA	2689			3.17	12.0	6450	0.35	5490	1.50	17.30	176.00	10.00	116.00	1180.00	8.00		
194	DC-TRK-540PA	19140			3.17	24.0	5500	0.17	4600	6.55	15.50	158.00	7.53	98.04	1000.00	3.00		
195	DC-TRK-545SA	23115			3.17	12.0	4200	0.25	3250	0.70	14.11	144.00	4.80	68.60	700.00	2.80		
196	DC-TRK-545SA	1965			3.17	24.0	12500	0.40	9900	1.00	17.20	175.00	17.86	83.30	850.00	4.70		
Typical Grade xRK-550/555																		
197	DC-TRK-550PA	3885	35.8	57.0	3.17	12.0	6600	0.36	5700	1.80	25.20	257.10	15.05	196.10	2000.00	16.00		
198	DC-TRK-555PA	25108			3.17	12.0	2500	0.15	2100	0.50	16.37	167.00	3.67	117.60	1200.00	3.40		
199	DC-TRK-550SA	3742			3.17	7.4	4600	0.35	3900	1.50	15.78	161.00	6.49	102.90	1050.00	6.00		
200	DC-TRK-550PH	9018			3.17	7.2	18200	1.70	16058	12.70	31.20	318.00	4.80	246.70	2700.00	95.60		
201	DC-TRK-550PH	8025			3.17	7.4	13800	3.00	11700	10.00	39.22	400.00	48.00	259.80	2650.00	56.00		
202	DC-TRK-555PH	22105			3.17	24.0	5416	0.28	4372	0.81	25.50	260.00	11.65	132.35	1350.00	4.50		
203	DC-TRK-555PH	3260			3.17	12.0	4100	0.35	3550	1.50	26.37	269.00	9.80	201.00	2050.00	10.00		
204	DC-QRK-550DH	75027			*37.5 with Yoke	57.0	3.17	14.4	19800	1.30	17600	10.52	62.20	634.67	114.63	565.74	5772.90	85.21
205	DC-QRK-550DH	75024					3.17	12.0	20600	1.35	18200	10.19	47.49	484.64	90.51	406.00	4142.90	76.92
206	DC-QRK-555DH	22120					3.17	18.0	3400	0.09	2900	0.47	18.83	192.17	5.72	123.93	1264.60	2.65
207	DC-QRK-555DH	26070	3.17	24.0			8500	0.18	7400	1.27	28.67	292.58	22.22	231.67	2364.00	9.02		
208	DC-QRK-555DH	19160	3.17	15.0			2300	0.07	1900	0.30	13.49	137.65	2.68	71.73	731.90	1.30		
209	DC-QRK-555DH	32050	3.17	12.0			6100	0.24	5300	1.49	22.45	229.10	12.46	161.69	1649.90	9.23		

Japan Magnets.,Inc

Head Office / Japan Bldg 4F, 1-1646-2, Kamikawa, Suwa, Nagano, Japan zipcode 392-0021

Tel /+81-266-56-1021

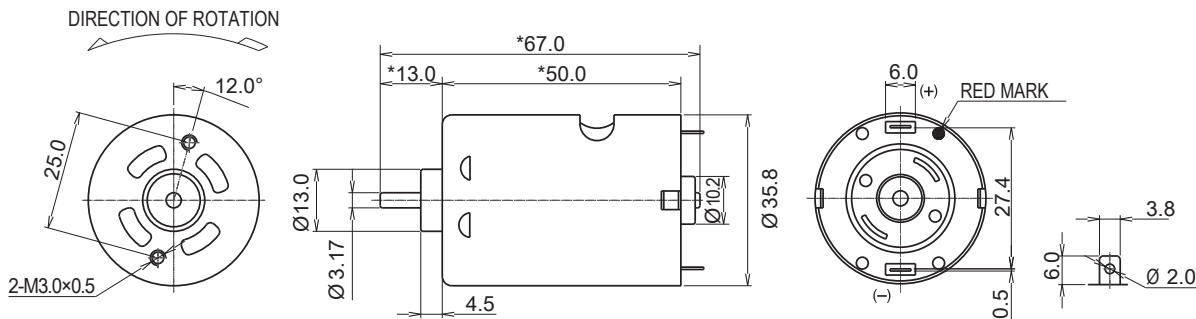
Fax /+81-266-56-1430

HP / <http://www.jmi-motion.com>

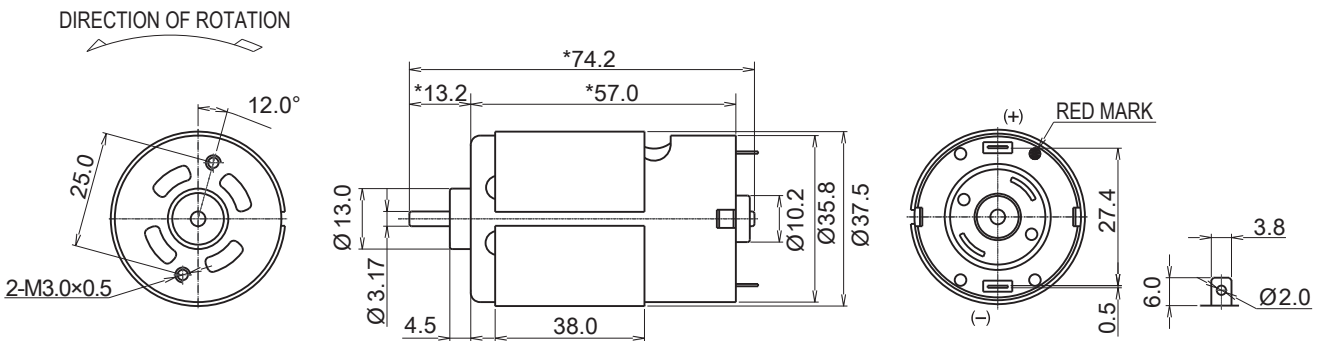
Housing ϕ 35mm DC Brush Motor xRK-540/545/ 550/555

OUTLINE

DC-QRK-540/545

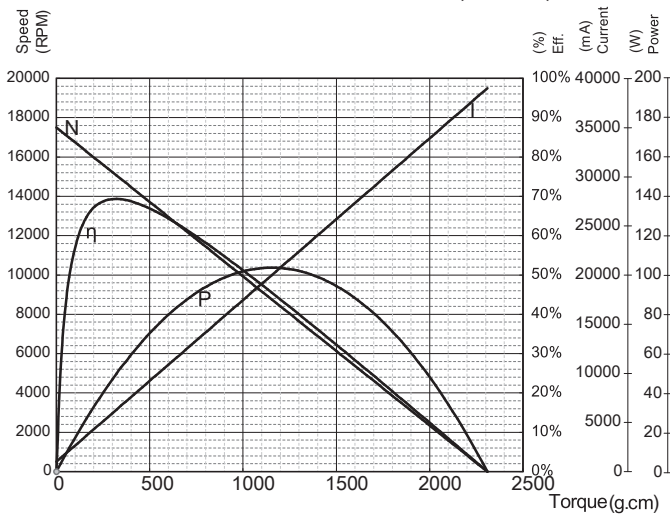


DC-QRK-550/555

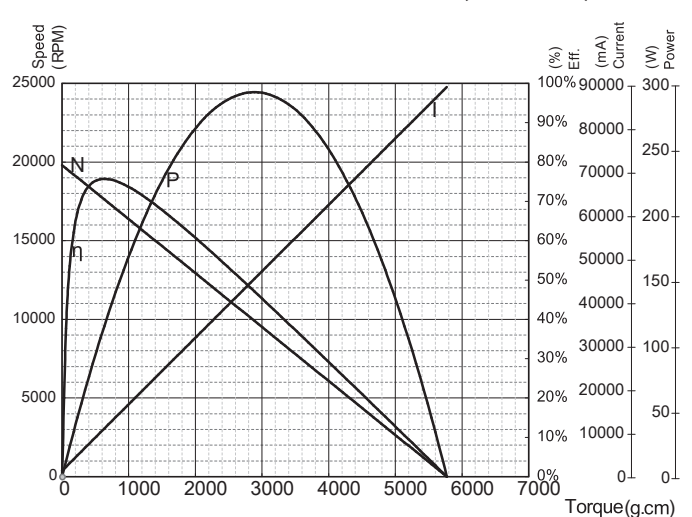


Typical Performance

DC-QRK-540DH-50045(12V)



DC-QRK-550DH-75027(14.4V)



Japan Magnets.,Inc

Head Office / Japan Bldg 4F, 1-1646-2, Kamikawa, Suwa, Nagano, Japan zipcode 392-0021

Tel /+81-266-56-1021

Fax /+81-266-56-1430

HP / <http://www.jmi-motion.com>