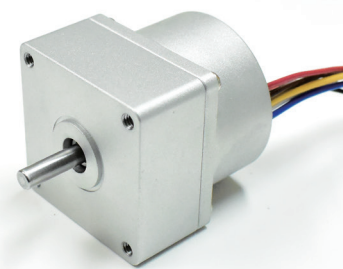


DC Brushless Motor STC-BMI-4545-0003 (BL00400ドライバー付属)

OUTPUT: 23 W (APPROX)

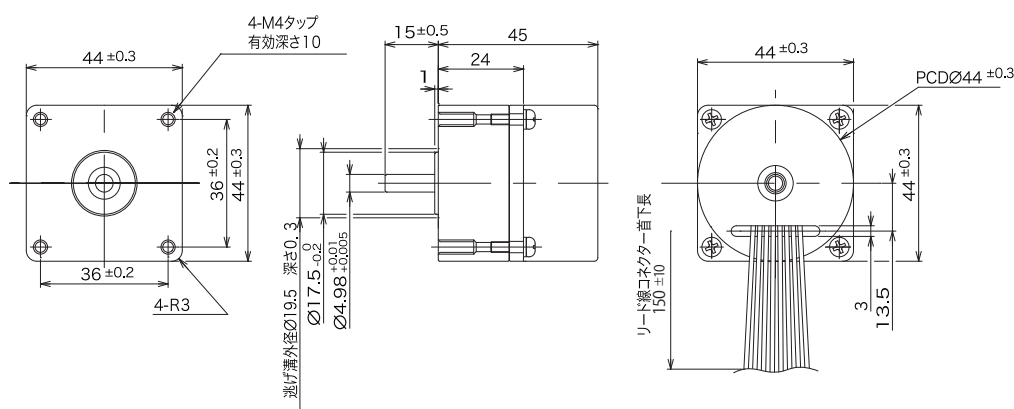
WEIGHT (APPROX): 210 g

ドライブ回路非内蔵



Motor Parameter

| Model No. | Product No. | Rated Voltage | No Load | | at Efficiency | | | | Configuration | |
|--------------|-------------|---------------|---------------|-----------------|---------------|--------|-------------|---------------|---------------|----------|
| | | | No Load Speed | No Load Current | Rated Torque | | Rated Speed | Rated Current | | Output |
| | | | (V) | (rpm) | (mA) | (mN·m) | (g·cm) | (rpm) | | (mA) |
| STC-BMI-4545 | -0003 | 12 | 5500 | 400 | 49.0 | 500 | 4200 | 2400 | 23 | 10 A max |

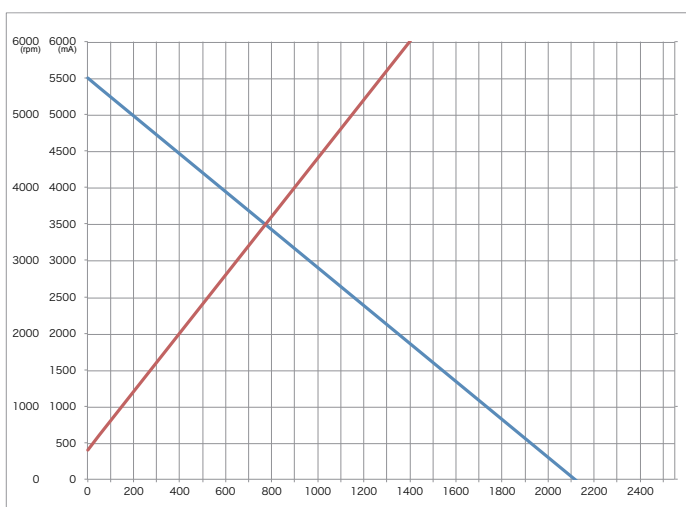


Housing_JST
 VLP-03V
 Pin 1_UM
 Pin 2_VM
 Pin 3_WM

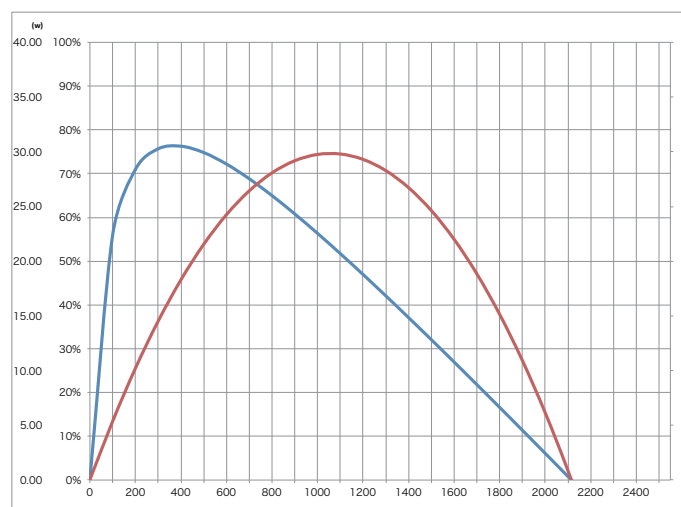
Housing_JST PHR-5
 Pin 1_+5V
 Pin 2_GND
 Pin 3_HU
 Pin 4_HV
 Pin 5_HW

N-T/N-I Performance

— 回転数 (rpm)
 — 電流値 (mA)



— 効率 (%)
 — 出力 (W)



Japan Magnets.,Inc

Head Office / Japan Bldg 4F, 1-1646-2, Kamikawa, Suwa, Nagano, Japan zipcode 392-0021

Tel /+81-266-56-1021

Fax /+81-266-56-1430

HP / <http://www.jmi-motion.com>